

RETROSPECTIVE RESULTS ON THE CKM MATRIX AND THE UNITARITY TRIANGLE

Based on results available
around 2004

P r e l i m i n a r y

July 15th, 2010

The CKMfitter Group

Abstract

This document provides a retrospective collection of inputs to the global CKM analysis, and numerical results obtained with the use of the CKMfitter fit package. Experimental and theoretical information available at the time of ICHEP 2004, are used. These include for the first time constraints on the CKM angle α . The statistical method employed is the frequentist approach *Rfit*. Detailed background information on the methodology and the treatment of experimental and theoretical uncertainties is provided in:

CP VIOLATION AND THE CKM MATRIX:
ASSESSING THE IMPACT OF THE ASYMMETRIC *B* FACTORIES

By CKMfitter Group

Eur. Phys. J. **C41**, 1-131, 2005 [hep-ph/0406184]

The CKMfitter Group

J. Charles^b, O. Deschamps^c, S. Descotes-Genon^f, R. Itoh^e, H. Lacker^d, S. Monteil^c,
V. Niess^c, J. Ocariz^h, S. T'Jampens^a, V. Tisserand^a, K. Trabelsi^e

^a*Laboratoire d'Annecy-Le-Vieux de Physique des Particules
9 Chemin de Bellevue, BP 110, F-74941 Annecy-le-Vieux Cedex, France
(UMR 5814 du CNRS-IN2P3 associée à l'Université de Savoie)
e-mail: tisserav@lapp.in2p3.fr, tjamp@lapp.in2p3.fr*

^b*Centre de Physique Théorique,
Campus de Luminy, Case 907, F-13288 Marseille Cedex 9, France
(UMR 6207 du CNRS associée aux Universités d'Aix-Marseille I et II
et Université du Sud Toulon-Var; laboratoire affilié à la FRUMAM-FR2291)
e-mail: charles@cpt.univ-mrs.fr*

^c*Laboratoire de Physique Corpusculaire de Clermont-Ferrand
Université Blaise Pascal
24 Avenue des Landais F-63177 Aubiere Cedex
(UMR 6533 du CNRS-IN2P3 associée à l'Université Blaise Pascal)
e-mail: odescham@in2p3.fr, monteil@clermont.in2p3.fr*

^d*Humboldt-Universität zu Berlin,
Institut für Physik, Newtonstr. 15,
D-12489 Berlin, Germany
e-mail: lacker@physik.hu-berlin.de*

^e*High Energy Accelerator Research Organization, KEK
1-1 Oho, Tsukuba, Ibaraki 305-0801 Japan
e-mail: ryosuke.itoh@kek.jp, karim.trabelsi@kek.jp*

^f*Laboratoire de Physique Théorique
Bâtiment 210, Université Paris-Sud 11, F-91405 Orsay Cedex, France
(UMR 8627 du CNRS associée à l'Université de Paris-Sud 11)
e-mail: Sebastien.Descotes-Genon@th.u-psud.fr*

^h*Laboratoire de Physique Nucléaire et de Hautes Energies,
IN2P3/CNRS, Université Pierre et Marie Curie Paris 6
et Université Denis Diderot Paris 7, F-75252 Paris, France
e-mail: Ocariz@in2p3.fr*

Parameter	Value \pm Error(s)	Reference	Errors	
			GS	TH
$ V_{ud} $	0.9738 ± 0.0004	[1]	*	-
$ V_{us} $	$0.2228 \pm 0.0039 \pm 0.0018$	[2]	*	-
$ V_{ub} $	$(3.90 \pm 0.08 \pm 0.68) \times 10^{-3}$	[3, 4]	*	*
$ V_{cb} $	$(41.6 \pm 0.58 \pm 0.80) \times 10^{-3}$	[3, 4]	*	*
$ \varepsilon_K $	$(2.282 \pm 0.017) \times 10^{-3}$	[2]	*	-
Δm_d	$(0.502 \pm 0.006) \text{ ps}^{-1}$	[3]	*	-
Δm_s	$> 14.5 \text{ ps}^{-1}$	[3]	*	-
$\sin(2\beta)_{[c\bar{c}]}$	0.726 ± 0.037	[3]	*	-
$S_{\rho\rho,L}^{+-}, C_{\rho\rho,L}^{+-}$	Inputs to isospin analysis	[4]	*	-
$\bar{m}_c(m_c)$	$(1.2 \pm 0.0 \pm 0.2) \text{ GeV}$	[2]	*	*
$\bar{m}_t(m_t)$	$(167.0 \pm 0.0 \pm 5.2) \text{ GeV}$	[2]	*	*
B_K	$0.86 \pm 0.06 \pm 0.14$	[5]	x	x
$\alpha_s(m_Z^2)$	0.1172 ± 0.0020	[2]	-	*
η_{cc}	Calculated from $\bar{m}_c(m_c)$ and α_s	[6]	-	*
η_{ct}	0.47 ± 0.04	[7]	-	*
η_{tt}	0.5765 ± 0.0065	[6, 7]	-	*
$\eta_B(\overline{\text{MS}})$	0.55 ± 0.01	[8]	-	*
f_{B_s}	$(217 \pm 12 \pm 11) \text{ MeV}$	[9]	x	x
B_s	1.37 ± 0.14	[9]	x	x
f_{B_s}/f_{B_d}	$1.21 \pm 0.05 \pm 0.01$	[9]	x	x
B_s/B_d	1.00 ± 0.02	[9]	x	x

Table 1: *Prospective inputs to the standard CKM fit. Central values of observables are meaningless; they have been adjusted to be in perfect agreement with the global fit. If not stated otherwise: for two errors given, the first is statistical and accountable systematic and the second stands for systematic theoretical uncertainties. The last two columns indicate Rfit treatment of the input parameters: measurements or parameters that have statistical errors (we include here experimental systematics) are marked in the ‘‘GS’’ column by an asterisk; measurements or parameters that have systematic theoretical errors are marked in the ‘‘TH’’ column by an asterisk. Upper part: experimental determinations of the CKM matrix elements. Middle upper part: CP-violation and mixing observables. Middle lower part: parameters used in SM predictions that are obtained from experiment. Lower part: parameters of the SM predictions obtained from theory.*

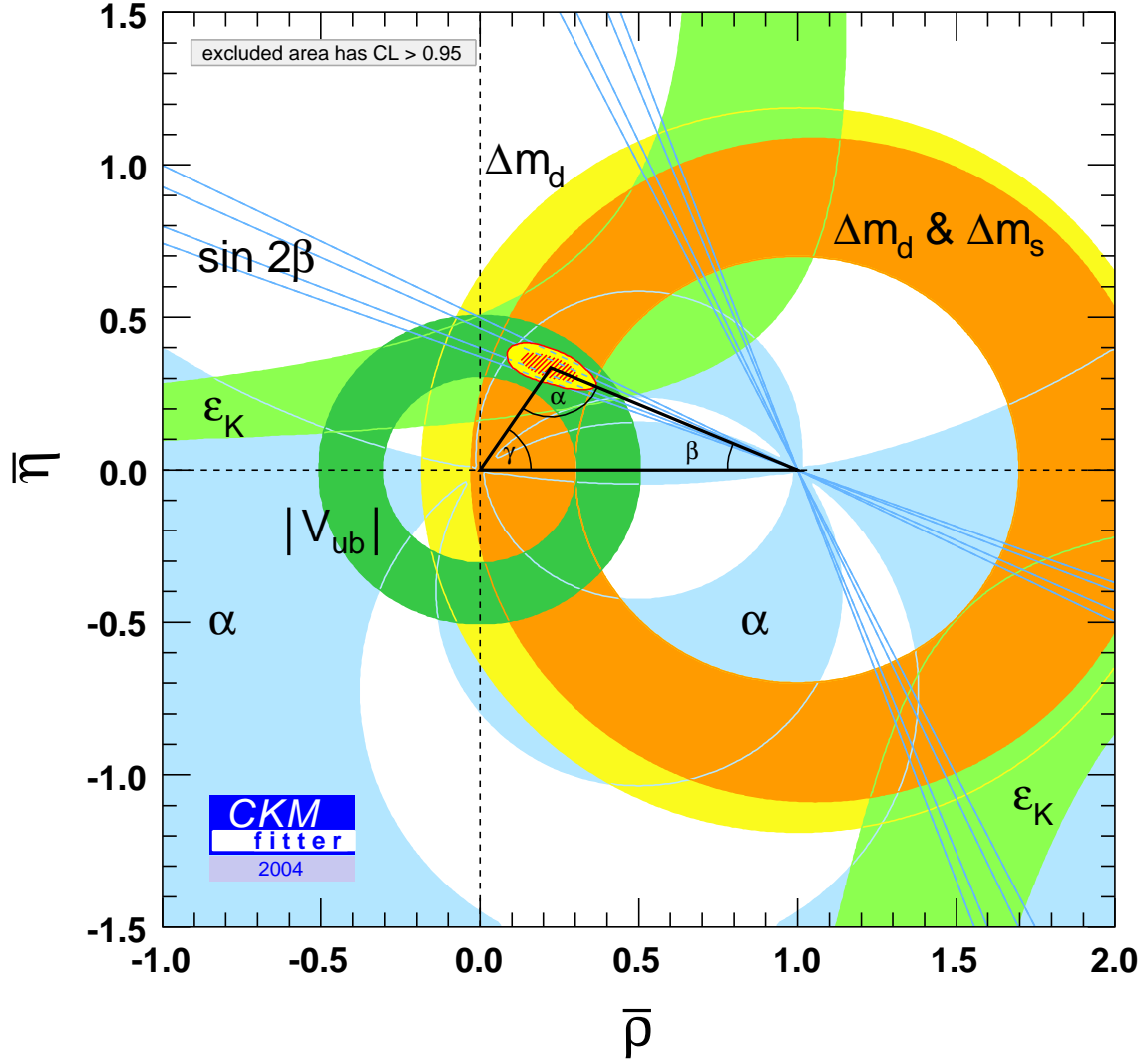


Figure 1: Constraints on the $(\bar{\rho}, \bar{\eta})$ plane including results available by 2004 in the global CKM fit. The experimental inputs correspond to all information, including the first results on CP violation from the B-factories, with numerical values summarised in Table 1. The red hashed region of the global combination corresponds to 68%CL.

References

- [1] J. C. Hardy and I. S. Towner, Phys. Rev. Lett. **94**, 092502 (2005) [arXiv:nucl-th/0412050].
- [2] K. Hagiwara *et al.* [Particle Data Group], Phys. Rev. D **66**, 010001 (2002).
- [3] J. Alexander *et al.* [Heavy Flavor Averaging Group (HFAG)], arXiv:hep-ex/0412073.
- [4] J. Charles *et al.* [CKMfitter Group], Eur. Phys. J. C **41**, 1 (2005) [arXiv:hep-ph/0406184].
- [5] L. Lellouch, Nucl. Phys. Proc. Suppl. **94**, 142 (2001)
- [6] U. Nierste, private communication (2003).
- [7] S. Herrlich and U. Nierste, Nucl. Phys. B **419**, 292 (1994)
- [8] G. Buchalla, A. J. Buras and M. E. Lautenbacher, Rev. Mod. Phys. **68**, 1125 (1996)
- [9] D. Becirevic, *In the Proceedings of 2nd Workshop on the CKM Unitarity Triangle, Durham, England, 5-9 Apr 2003, pp WG202* [arXiv:hep-ph/0310072].